



# AAPS REIMAGINE LEARNING PLAN

## 2020-21

Presented to the Board of Education  
July 22, 2020

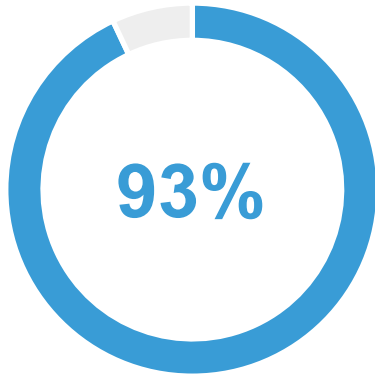
# FOOD AND PERSONAL CARE ITEMS DISTRIBUTION



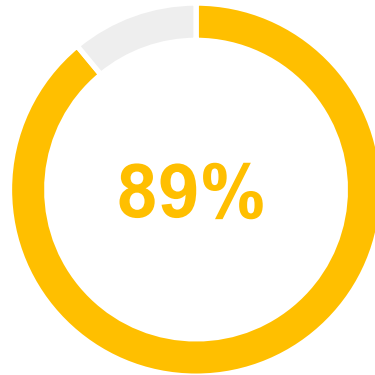
# AAPS STUDENT PARTICIPATION

PARTICIPATION OUTCOMES FROM CLASSROOM DATA CHECK FOR UNDERSTANDING

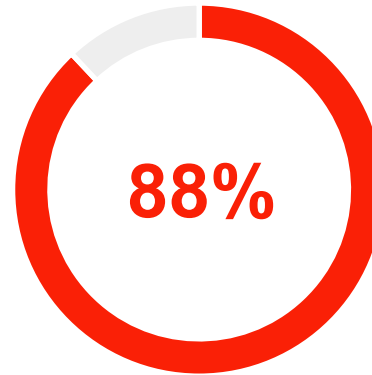
COMPLETED FOR MAY 15, 2020



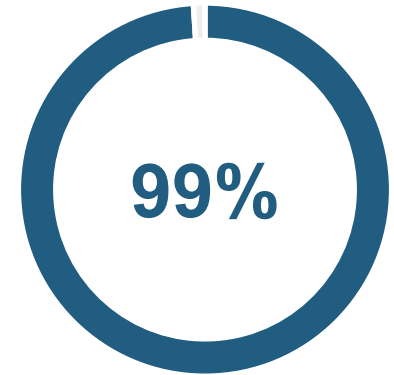
Elementary



Middle School



High School



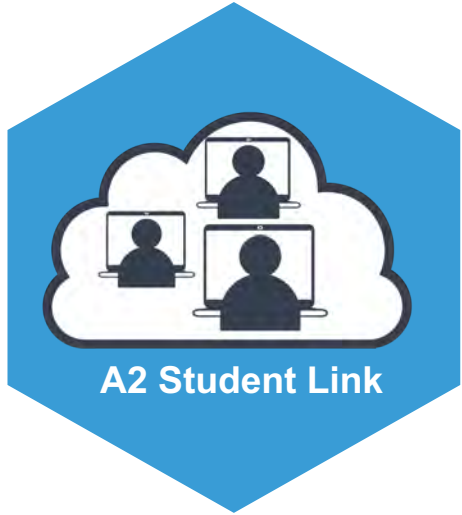
Confirmed Families with connectivity

# AAPS REIMAGINE LEARNING PLAN 2020-21

- ✓ Rationale, Context, and Overview of Recommendation
- ✓ Public Health Update
- ✓ Reimagine Learning Plan 2020-21 Highlights
- ✓ Next Steps



# AAPS REIMAGINE LEARNING PLAN 2020-21



# AAPS REIMAGINE LEARNING PLAN 2020-21



# ANN ARBOR PUBLIC SCHOOLS FACTS

**4th**



**LARGEST DISTRICT IN MICHIGAN**

Michigan Department of Education data

**2nd**



**LARGEST EMPLOYER IN ANN ARBOR**

Crain's Detroit Business and Ann Arbor SPARK Data

To convene a day of in school instruction

**18,500**  
STUDENTS



**25,000+**

Individuals

Must leave their homes

# CURRENT COVID REALITY

during weeks since the end of May, increasing cases in Washtenaw County, Reopen Michigan Region, Michigan & U.S.

By The New York Times Updated July 22, 2020, 9:09 A.M. E.T.

[Leer en español](#)



[Other State of Michigan coronavirus resources](#)

Michigan

## STATE OF MICHIGAN

Increase in cases since May

## U.S. CORONAVIRUS CASES

Highest number since beginning of pandemic with increasing death rates

## WASHTENAW COUNTY

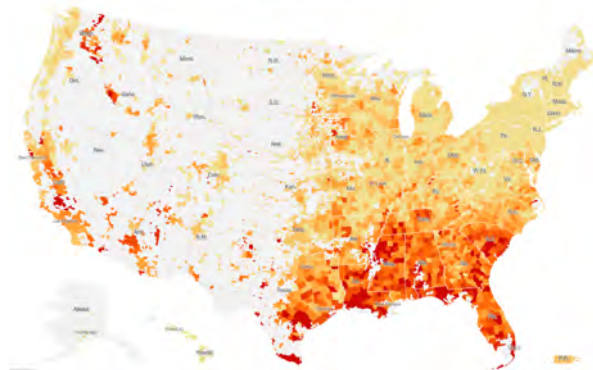
Increase in cases since June 6th

## ANN ARBOR REGION/ DETROIT AREA

Medium-High risk



TOTAL CASES  
**3.9 million+**  
DEATHS  
**142,031**  
Includes confirmed and probable cases where available





# Current COVID Concerns

## **Rising Number of Cases – 6 weeks**

Washtenaw Co, Reopen MI Region, Michigan and U.S.

## **Emerging Research/Data**

Rising % of cases among children & teens & transmission 10-19 year-olds, asymptomatic transmitters

## **Unknowns About COVID**

short & long-term impacts, aerosol transmission

## **Still Unmet Needs**

Readily available testing & timely results, contact tracing & sustainable PPE supplies

# CURRENT COVID REALITY

## RECENT RESEARCH EMERGING & GROWING CONCERN

### Summer Camps Bring Virus Warning

[https://www.washingtonpost.com/opinions/this-summer-camp-took-extraordinary-covid-19-precautions-it-still-failed/2020/07/14/998e172e-c22a-11ea-b178-bb7b05b94af1\\_story.html](https://www.washingtonpost.com/opinions/this-summer-camp-took-extraordinary-covid-19-precautions-it-still-failed/2020/07/14/998e172e-c22a-11ea-b178-bb7b05b94af1_story.html)

### Older Children Spread COVID Same as Adults

*S. Korea study of 65,000 people*

<https://www.bloomberg.com/news/articles/2020-07-19/covid-19-spread-fastest-by-teens-and-tweens-korea-study-finds>

**Children and teens, are accounting for a rising percentage of infections in the U.S.**

### Childcare center outbreaks

<https://www.charlotteobserver.com/news/coronavirus/article244050757.html>

# UNANSWERED QUESTIONS WITH COVID

## Students have not been together with staff in school classrooms since mid-March

- *What will be the nature of transmission in a classroom/school setting*

## Infection Risks

- *Short, medium & long-term impacts of contracting COVID for small children, older children, and adults*

## Transmission of Virus

- *Clear understanding of science of transmission via droplets from a cough, sneeze and possibility of aerosolized droplets and the distinct impact of talking, singing and participating in congregant activities together*

# CDC GUIDING PRINCIPLES FOR RETURN TO SCHOOL

The more people a student or staff member interacts with, and the longer that interaction, the higher the risk of COVID-19 spread. The risk of COVID-19 spread increases in school settings as follows:

**Lowest Risk:** Students and teachers engage in virtual-only classes, activities, and events.

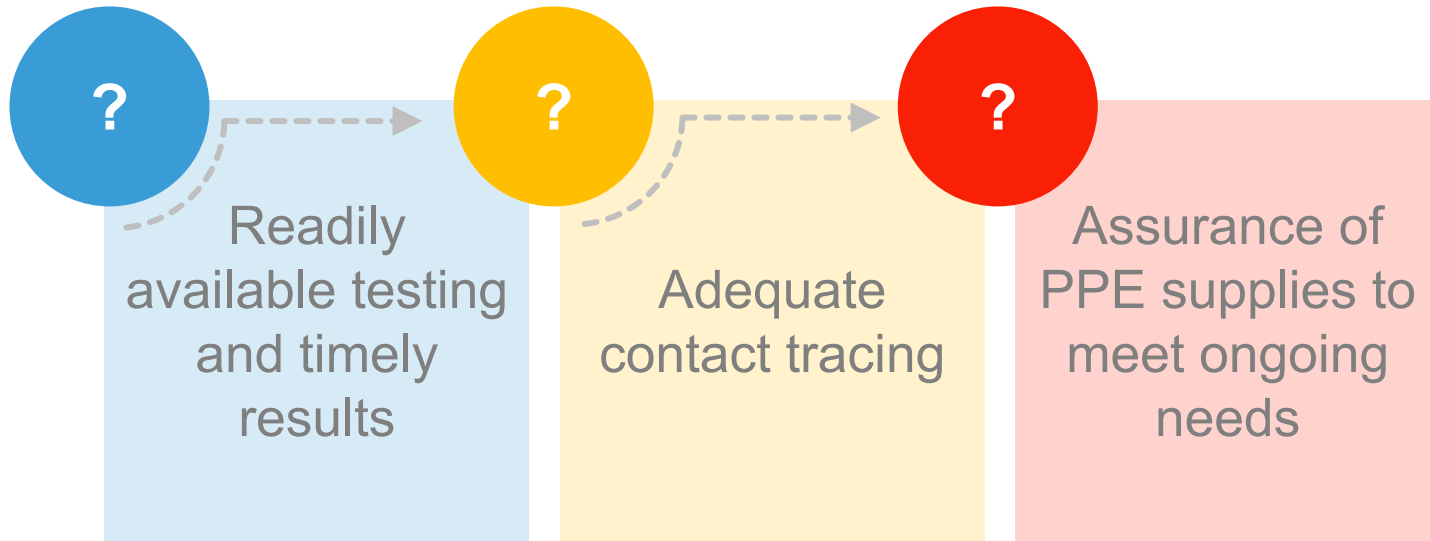
**More Risk:** Small, in-person classes, activities, and events. Groups of students stay together and with the same teacher throughout/across school days and groups do not mix. Students remain at least 6 feet apart and do not share objects (e.g., hybrid virtual and in-person class structures, or staggered/rotated scheduling to accommodate smaller class sizes).

**Highest Risk:** Full sized, in-person classes, activities, and events. Students are not spaced apart, share classroom materials or supplies, and mix between classes and activities.

<https://www.cdc.gov/coronavirus/2019-ncov/community/schools-childcare/schools.html>

# ONGOING CONCERNS

## FUNDAMENTAL CONCERNS AND NEEDS FOR A CONFIDENT FULL REOPENING



# AAPS REIMAGINE LEARNING PLAN 2020-21

Week of  
August 31st

**Preparation and onboarding week for students & families**  
more specific information will be received from principal or teacher mid-August

AUGUST

Tuesday,  
September 8

**All students report to class**  
2020-21 school year begins

SEPTEMBER

# AAPS REIMAGINE LEARNING PLAN 2020-21

## PROGRAM OPPORTUNITIES

### A2 Student Link

Full virtual, synchronous learning classroom



### A2 Classroom Connect

Interactive synchronous learning:  
virtual to hybrid model for 20-21

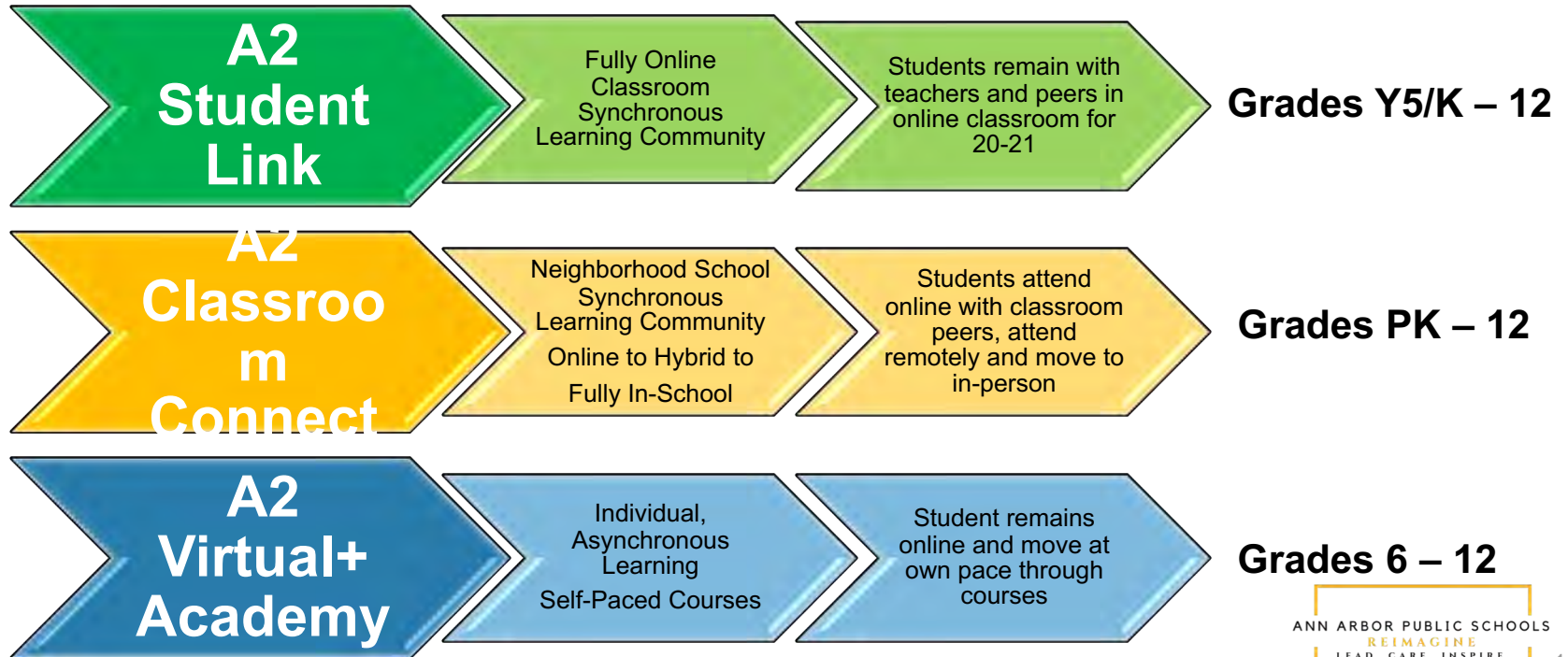


### A2Virtual

Full virtual, independent, self-paced learning

# AAPS REIMAGINE LEARNING PLAN 2020-21

## PROGRAM OPPORTUNITIES





# AAPS REIMAGINE LEARNING PLAN 2020-21

## SPECIALIZED SUPPORTS FOR STUDENTS WITH SPECIAL NEEDS

- **Learning through synchronous, online instruction**
  - Including service provision to support IEP
- **Additional supports on Wednesdays**
  - Including service provision and paraprofessional support
- **Instruction driven by Universal Design for Learning (UDL) framework**
- **Social Emotional Learning (SEL)**



# AAPS REIMAGINE LEARNING PLAN 2020-21

## ACCELERATION OF LEARNING

Students may choose from wide spectrum of options:

- AAPS Accelerated & Advanced Placement
- International Baccalaureate
- World Language, and other opportunities
- Dual Enrollment and Community Resource



# AAPS REIMAGINE LEARNING PLAN 2020-21

## WEEKLY LEARNING SCHEDULE

- Real-time classroom instruction 4 days per week:
  - ✓ Mon-Tues & Thur-Fri
- Wednesday dedicated AAPS Exploration Learning Day
- Saturday – full menu of recreational opportunities for families



# AAPS REIMAGINE LEARNING PLAN 2020-21

## ACADEMIC PROGRAM OPTIONS

- Full AAPS curricula and programming
- Student attendance and progress will be monitored
- Grades will be given
- Appropriate technology device, instructional and exploratory/elective materials provided

# AAPS REIMAGINE LEARNING PLAN 2020-21

## NEXT STEPS



**August 12**

**SELECT PROGRAM  
PREFERENCE  
FOR FALL**



**SCHOOL AND  
COMMUNITY INPUT  
AND FEEDBACK**



**CONTINUE  
PERSONAL  
RESPONSIBILITY**

# AAPS REIMAGINE LEARNING PLAN 2020-21

## NEXT STEPS



**CONTINUE  
PERSONAL  
RESPONSIBILITY**

- **Wear a mask**
- **Watch your distance – 6 feet**
- **Wash your hands**

ANN ARBOR PUBLIC SCHOOLS

REIMAGINE

LEAD. CARE. INSPIRE.



AAPS REIMAGINE LEARNING PLAN

2020-21