

The logo for Ann Arbor Public Schools features a yellow rectangular frame. Inside the frame, the text "ANN ARBOR PUBLIC SCHOOLS" is written in a bold, black, sans-serif font. Below this, the motto "LEAD. CARE. INSPIRE." is written in a smaller, black, sans-serif font. At the bottom of the frame, there are three colored squares: a blue square with a white star, a red square with a white heart, and a yellow square with a white exclamation point.

ANN ARBOR PUBLIC SCHOOLS
LEAD. CARE. INSPIRE.

Superintendent's Update

Board of Education Meeting
February 10, 2021

OPTION FOR HYBRID RETURN TO IN-PERSON LEARNING

AAPS will begin phasing in the following students for hybrid, in-person learning when safe to do so:

STAGE 1

- PK-12 Students in Self-Contained Classroom Placements
- Preschool students
- Young Fives Students
- Kindergarten Students
- Learning Centers – Identified Students Grades 6-12

STAGE 2

- 1st and 2nd Grade Students

STAGE 3

- 3rd, 4th, and 5th Grade Students

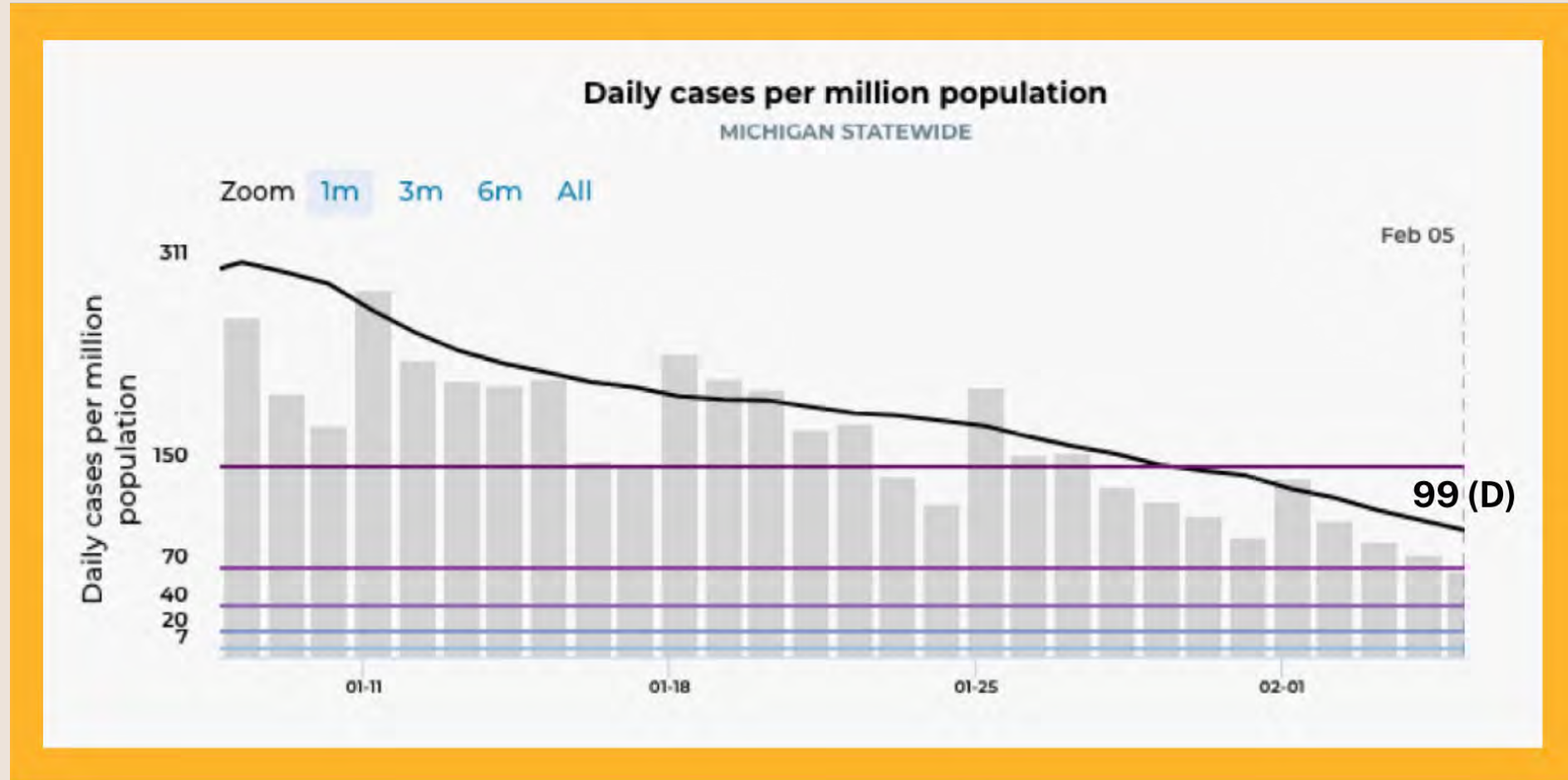
ANN ARBOR PUBLIC SCHOOLS
LEAD. CARE. INSPIRE.



COVID-19 Update

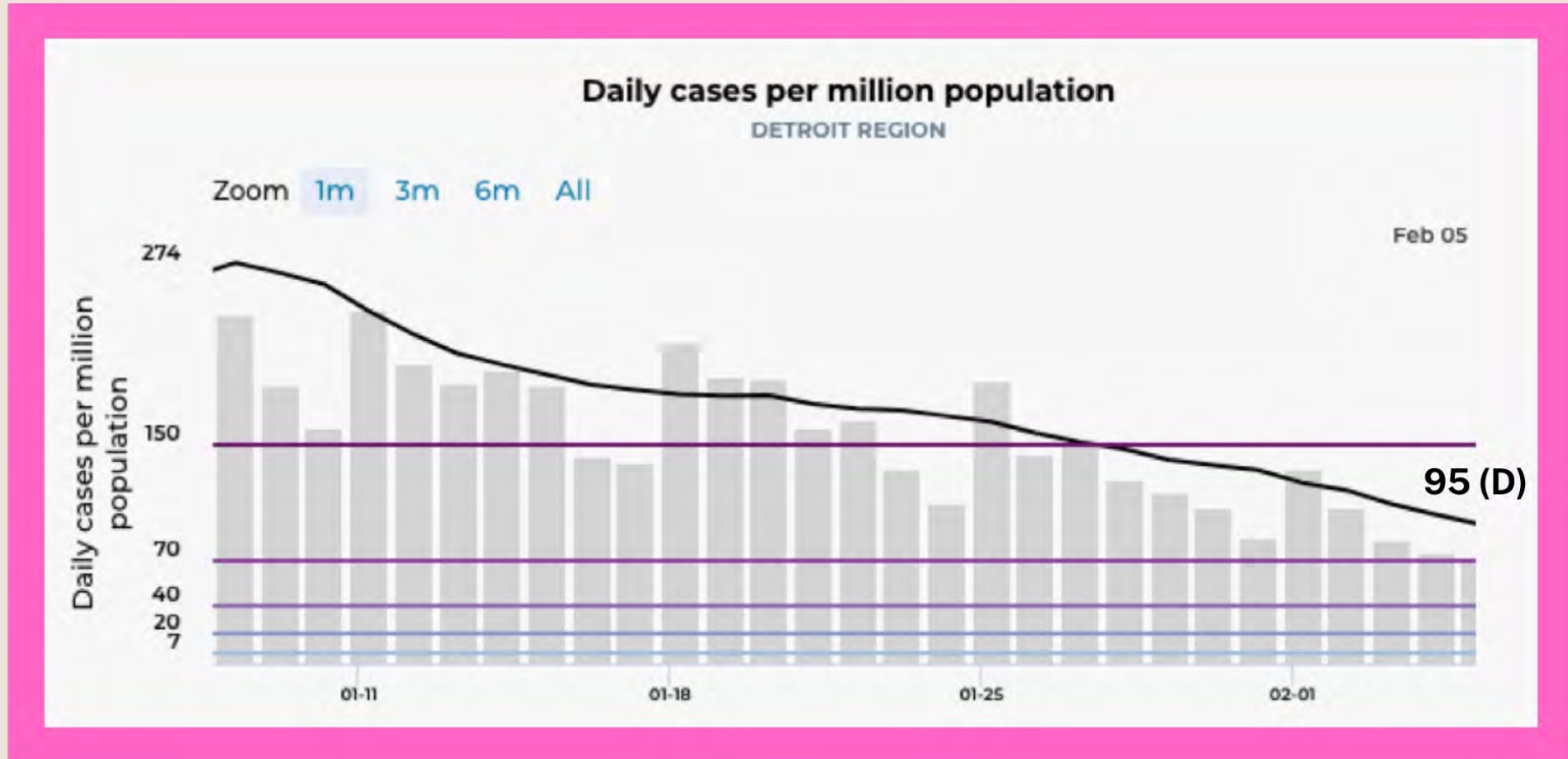
Michigan: Daily Cases Per Million

Data retrieved from MI Safe Start Map
Updated as of February 5, 2021



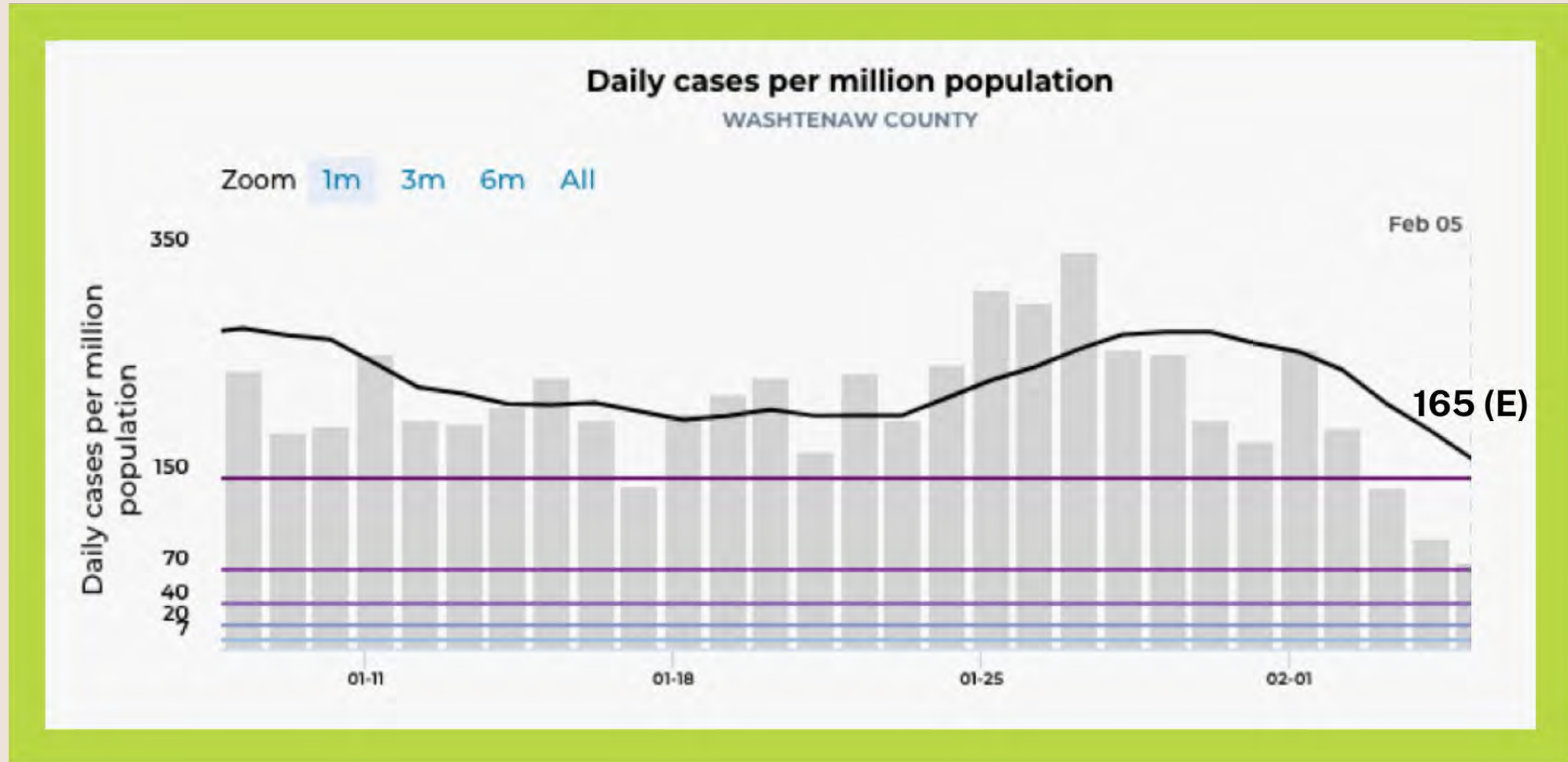
Region: Daily Cases Per Million

Data retrieved from MI Safe Start Map
Updated as of [February 5, 2021](#)



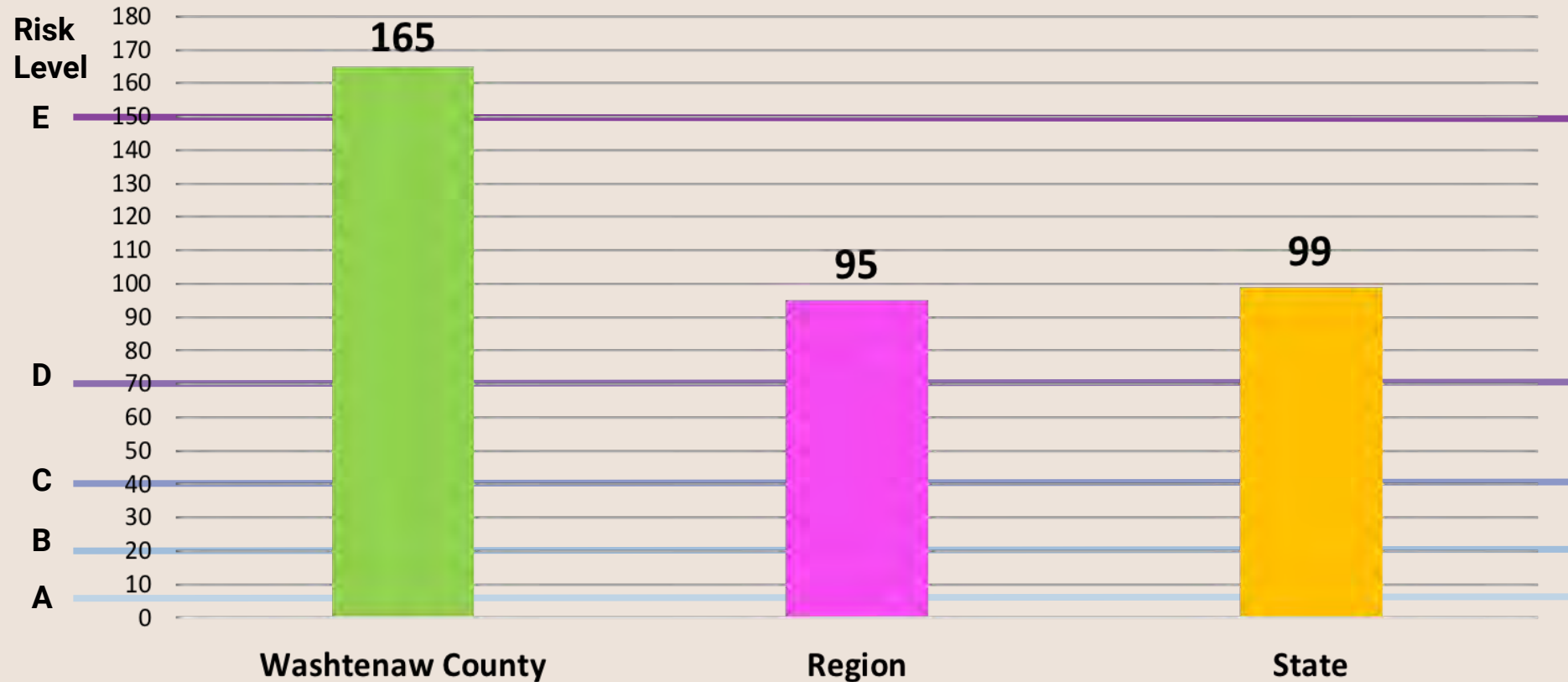
Washtenaw County: Daily Cases Per Million

Data retrieved from MI Safe Start Map
Updated as of [February 5, 2021](#)



Daily Cases Per Million Population

Data retrieved from MI Safe Start Map
Updated as of [February 5, 2021](#)



COVID Infections in Michigan Schools

Data retrieved from Mlive and Michigan.gov
Updated as of February 8, 2021



MICHIGAN SCHOOL-RELATED OUTBREAKS:

- **136** staff and students infected in 29 K-12 **new** school districts and two colleges
- **489** staff and students infected in 81 PK-12 **ongoing** school outbreaks
- **7,724** total cumulative cases in schools as a result of ongoing infections
- Outbreak data for K-12 schools includes only cases in which the student or staff was infected at school or at a school-related function.

SOURCE: [Michigan.gov Coronavirus - School-Related Outbreak Reporting](#)

COVID Infections in Michigan Schools

Data retrieved from Mlive and Michigan.gov
Updated as of February 8, 2021



WASHTENAW COUNTY SCHOOL OUTBREAKS:

NEW OUTBREAKS	Grade	Affected	# Cases	Added
Concordia University	College	Students	4	Feb 8
ONGOING OUTBREAKS				
St. Paul Lutheran School	PK-Elem	Both	16	Jan 25
Chelsea School District	PK-Elem	Both	2	Jan 25
Dexter Community Schools	Middle Sch	Staff	2	Feb 1
University of Michigan	College	Both	668*	Sep 14
Eastern Michigan University	College	Both	109*	Sep 14

**last 28 days, not cumulative*

ANN ARBOR PUBLIC SCHOOLS
LEAD. CARE. INSPIRE.



District Updates

AAPS Food Distribution

- Emergency food distribution continues through June 30, 2021.
- **849,940 meals** distributed since March 16, 2020.
- Breakfast, lunch and newly added dinners are pre-packaged, balanced meals available for pick-up or delivery.

Pre-packaged dinners added to breakfast & lunch distribution

