

The logo for Ann Arbor Public Schools features a yellow rectangular frame. Inside the frame, the text "ANN ARBOR PUBLIC SCHOOLS" is written in a bold, sans-serif font. Below this, the motto "LEAD. CARE. INSPIRE." is written in a smaller, spaced-out font. At the bottom of the frame, there are three colored squares: a blue square with a white atom symbol, a red square with a white heart, and a yellow square with a white exclamation mark.

ANN ARBOR PUBLIC SCHOOLS

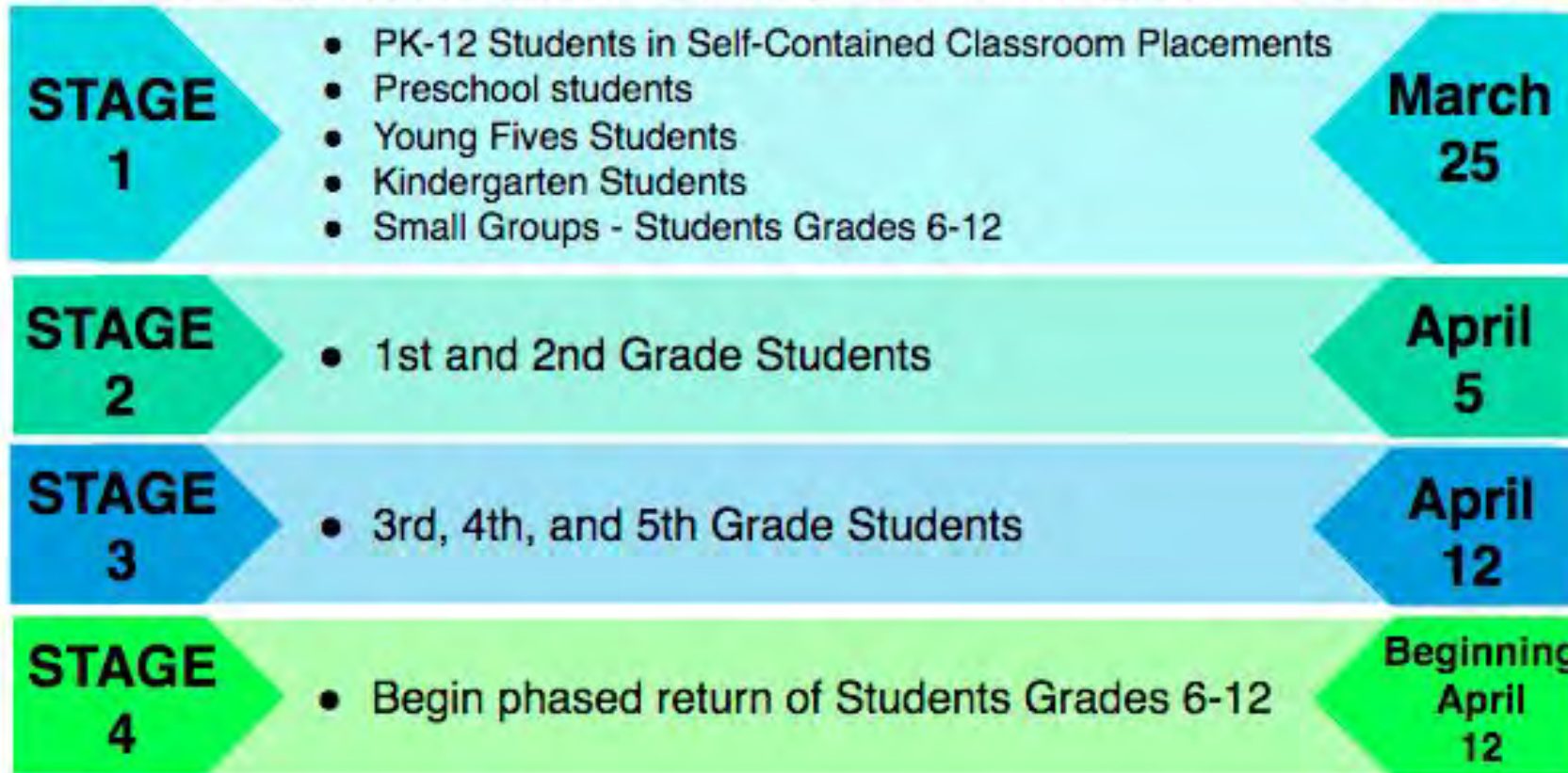
LEAD. CARE. INSPIRE.

Superintendent Update

Board of Education Meeting
March 17, 2021

Stages for In Person Hybrid Learning

AAPS will begin phasing in the following students for hybrid instruction, as follows:



Superintendent Update

March 17, 2021

- 1. Overview secondary hybrid instruction**
- 2. Focus on students with specialized learning needs**
- 3. Health update information & Spring break guidance**
- 4. Student interaction information**

Family Choice

AAPS families will always have the **option to remain fully virtual**.

Students who remain fully virtual will continue to receive **daily instruction remotely in much the same way they are currently experiencing**. Some changes are to be expected as teachers work with students in person and those online.

Safety remains the critical priority in the return to in-person **learning**. In order to ensure that appropriate **safety protocols and training are in place** and to ensure that **each and every classroom is appropriately distanced and balanced**, families will **make a choice in advance of the transition to hybrid learning**.

Final preparations
for return to in-school learning

“What does that
look like at my
child’s school?”

AAPS School Checklist

- Universal use of face masks
 - Physical Distancing: 6 ft
 - Small, consistent class cohorts
 - Modified classroom design and seating
 - Cleaning and disinfecting protocols
 - Handwashing and Hygiene
 - Indoor air quality preparation
 - Health Screening
 - Adequate PPE and cleaning supplies
-
- Staff Safety Training
 - Contact tracing processes
 - Rapid antigen testing
 - Vaccination of school staff

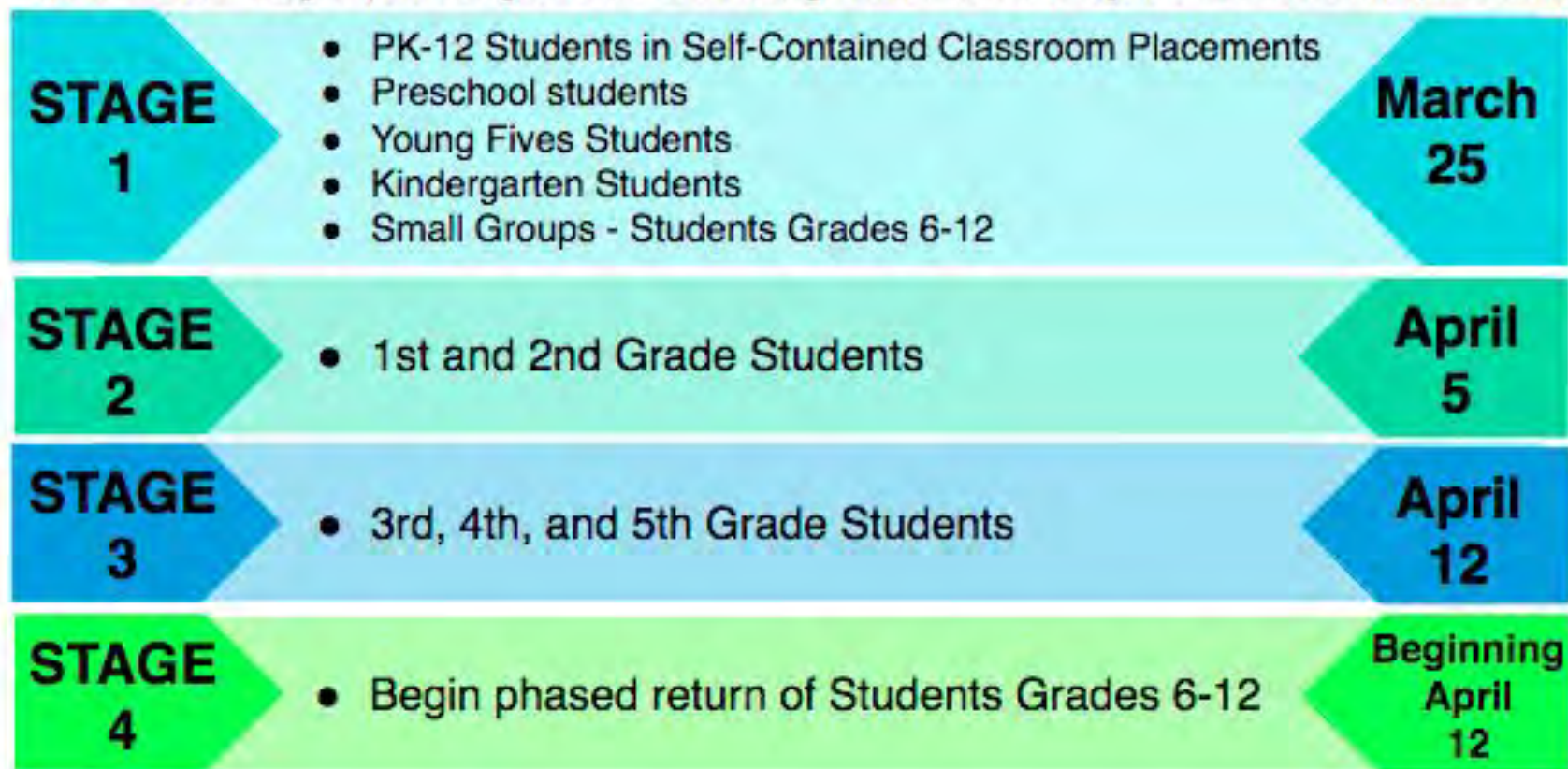
ANN ARBOR PUBLIC SCHOOLS
LEAD. CARE. INSPIRE.



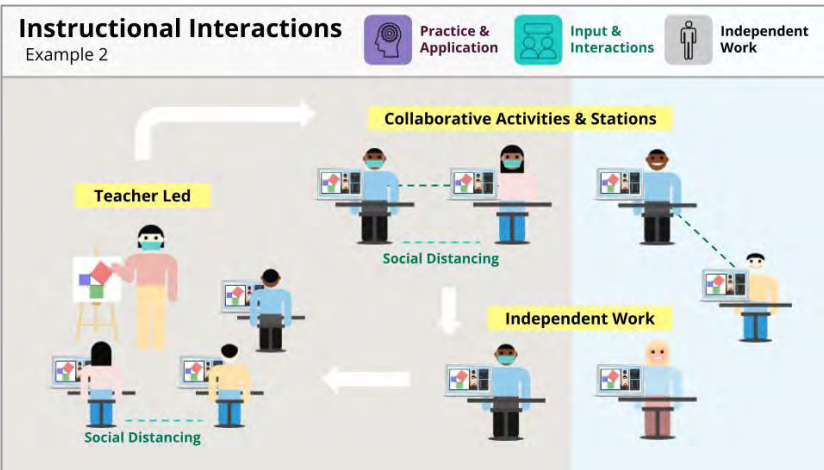
Overview Secondary Hybrid Instruction: Teaching & Learning

Stages for In Person Hybrid Learning

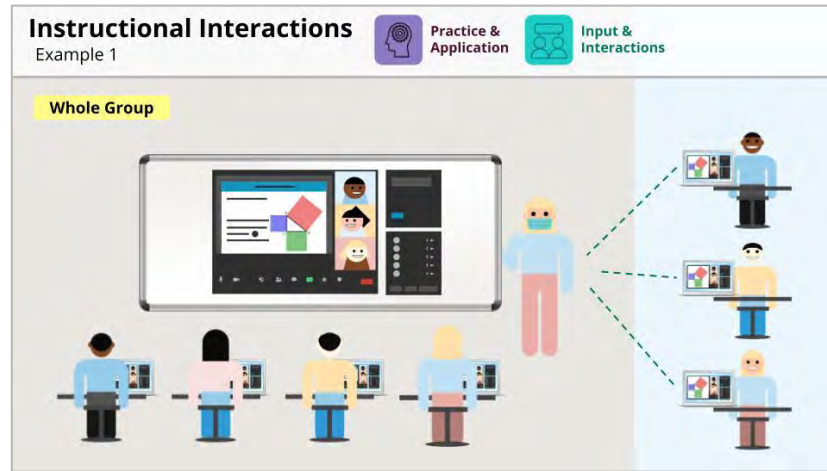
AAPS will begin phasing in the following students for hybrid instruction, as follows:



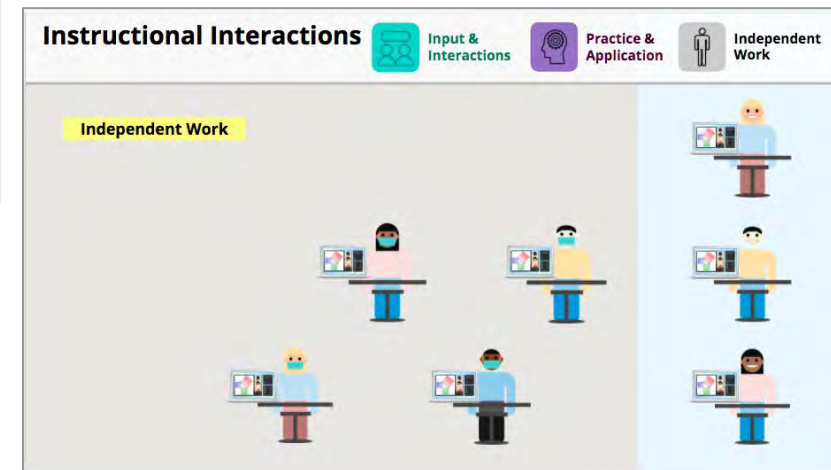
Modes of Effective Hybrid Instruction



SMALL GROUPS



WHOLE GROUP

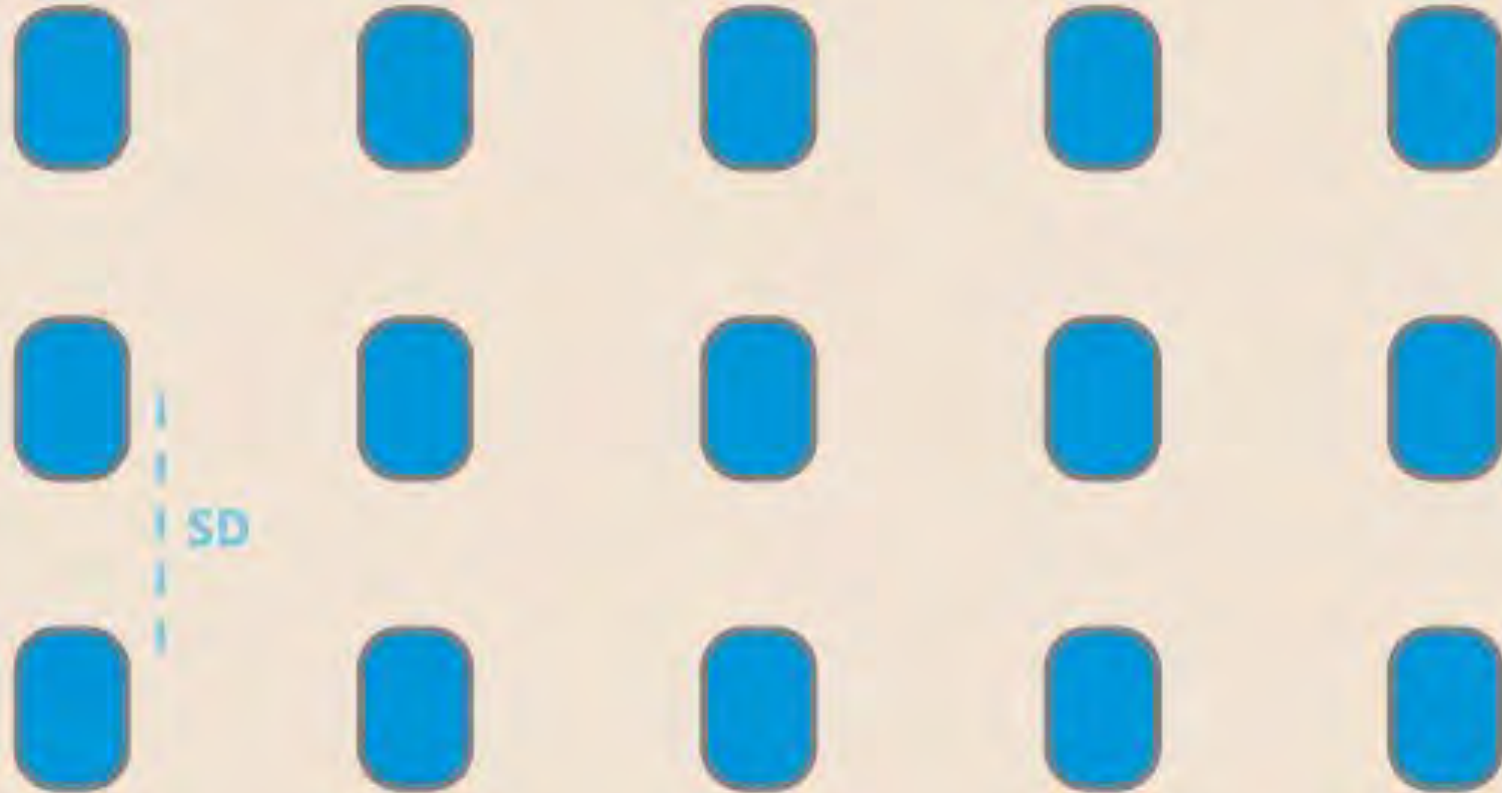


INDEPENDENT

Teacher Workspace

Secondary Sample Classroom Layout

Door



Hybrid Instruction in Secondary Classrooms





Special Education Hybrid Learning

Special Education: Safety, Masking, & Distancing

- During hybrid instruction we will continue to prioritize the health and safety of our students and staff by implementing the **Super Six mitigation** strategies.
- Every effort will be made to achieve 6 feet of **social distancing**, but in some cases this may not be possible in the administration of a full continuum of student services.
- Staff will have full access to **additional PPE** such as face shields, gowns and gloves as needed to maintain safety.
- Students will be supported with **care and patience** as they learn how to wear and maintain a mask during the school day. Students who are unable to wear masks independently will not be required to according to CDC guidelines.

Special Education IEPs and Evaluations

- **Our AAPS priority and goal is always to implement IEPs fully.**
While in the hybrid stage, school teams will review IEPs and GFECCLPs to maximize implementation.
- **Special education evaluations** will be conducted upon return to in person instruction. Evaluation processes have begun will continue into summer as necessary.
- AAPS will **prioritize evaluations** beginning with those most delayed and will steadfastly work to complete all evaluations.
- We are pleased to share that our **school psychologists have already begun** scheduling in person evaluations.

Special Education Support and Services

- **Full services will continue to be delivered** according to IEPs/GFECLPs while we are in the hybrid stage of learning.
- **Providing in person services will involve a transition period.**

For a short period of time, in person students will continue to receive these services virtually while our service providers determine new schedules based on family choices to participate in person or remain in the remote setting.
- **Paraprofessionals** will provide support for students in person and will also continue to provide support for their students who remain in remote settings.

ANN ARBOR PUBLIC SCHOOLS
LEAD. CARE. INSPIRE.



Health Update

CDC: Indicators & Thresholds for Community Transmission

Quick Review

Table 1. CDC Indicators and Thresholds for Community Transmission of COVID-19¹

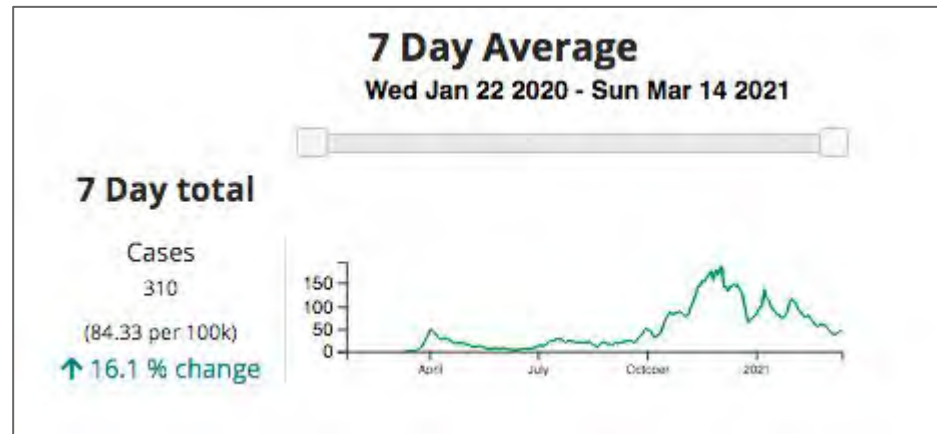
Indicator	Low Transmission Blue	Moderate Transmission Yellow	Substantial Transmission Orange	High Transmission Red
Total new cases per 100,000 persons in the past 7 days ²	0-9	10-49	50-99	≥100
Percentage of NAATs that are positive during the past 7 days ³	<5.0%	5.0%-7.9%	8.0%-9.9%	≥10.0%

NAATs = nucleic acid amplification tests (PCR tests)

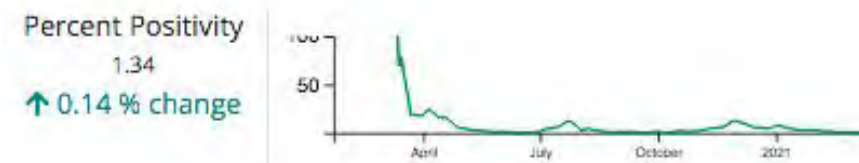
[cdc.gov/coronavirus/2019-ncov/community/schools-childcare/operation-strategy.html#mitigation-strategies](https://www.cdc.gov/coronavirus/2019-ncov/community/schools-childcare/operation-strategy.html#mitigation-strategies)

CDC: Washtenaw County Data as of Sunday, March 14, 2021

7 day total cases
310, or **84.33**
per 100K



Percent positivity
1.34%



<https://covid.cdc.gov/covid-data-tracker/#county-view>

Substantial Transmission Orange
50-99
8.0%-9.9%

Low Transmission Blue
0-9
<5.0%



CDC Operational Guidance Based on Thresholds

With Mitigation Measures and
Diagnostic Testing...

AAPS Hybrid Plan Elementary
Stages 1-3

AAPS Hybrid Plan Secondary
Stage 4

<https://www.cdc.gov/coronavirus/2019-ncov/community/schools-childcare/operation-strategy.html#mitigation-strategies>

Table 2. Recommended Implementation of Mitigation Strategies and K-12 School Learning Modes by Level of Community Transmission for Schools That Do Not Implement Expanded Screening Testing

Low Transmission Blue	Moderate Transmission Yellow	Substantial Transmission Orange	High Transmission Red
<p>All schools: Universal and correct use of masks is required; physical distancing; handwashing and respiratory etiquette; cleaning and maintaining healthy facilities; contact tracing in combination with isolation and quarantine. Diagnostic testing²: Symptomatic students, teachers, and staff and close contacts referred for diagnostic testing</p>			
<p>K-12 schools open for full in-person instruction Physical distancing of 6 feet or more to the greatest extent possible³</p>		<p>Elementary schools in hybrid learning mode or reduced attendance⁴ Physical distancing of 6 feet or more is required</p>	
		<p>Middle and high schools in hybrid learning mode or reduced attendance Physical distancing of 6 feet or more is required</p>	<p>Middle and high schools in virtual only instruction unless they can strictly implement all mitigation strategies, and have few cases; schools that are already open for in-person instruction can remain open, but only if they strictly implement mitigation strategies and have few cases⁵</p>



Reminder: Travel and Spring Break

- **The safest thing to do is stay home for spring break.**
- Many areas of Michigan, many states, and almost every other country still have high COVID transmission rates. Some areas have seen the emergence and spread of variants, which creates even more concern.
- With staged return in-school hybrid learning happening mostly after spring break, we all need to be vigilant about following our COVID-19 prevention routines both at home and if choosing to travel.
- Each of us must take responsibility to adhere to CDC, MDHHS, and WCHD travel and safety recommendations so we can start strong after Spring Break

Family Responsibilities

In-Person Hybrid Learning Option

- **Screen your student** for symptoms each morning before sending them to school. A District screening questionnaire will be provided.
- **Keep your student home** when they are exhibiting symptoms.
- **Immediately notify** your building principal if your student or someone in the household tests positive for COVID-19. **Speak with a district contact tracer** if needed for an investigation.
- Ensure your student has a **mask and water bottle** every day. Masks will be provided to those who do not have one.
- **Be available** to pick your student up from school should they begin to show symptoms while at school.
- **Be patient** and know that hybrid plans may change from day to day to better meet the needs of our students.
- Understand that **students or staff may need to quarantine** if there is a classroom case.

Student Responsibilities

In-Person Hybrid Learning Option

- **Wear a mask at all times**, except when eating or drinking.
 - Note: Students who are unable to remove a mask independently must not wear one. For all other students, rare exceptions can be made with a doctor's note for a valid medical reason. Care and patience will be exercised for students with special needs.
- **Bring a personal water bottle** daily. (AAPS will support this, if needed).
- **Follow the safety protocols to stay physically distanced** from others.
- **Monitor health status** and report symptoms immediately to an adult.

Building Preparations: Indoor Air Quality

- A new sequence of operations for the **HVAC controls system** (Enhanced Indoor Air Quality Mode (EIAQ)) has been programmed to provide increased ventilation and filtration above our typical operating mode, and well beyond code minimum of 2.8-3.5 Air Changes per Hour (ACH)
- **All HVAC filters** have been replaced and their density increased as much as the equipment will allow
- **All HVAC units (approximately 1,000) have been commissioned.** This includes opening the unit, cleaning everything, and verifying the cooperation of items like dampers, actuators, etc.

Building Preparations: Indoor Air Quality

- Most AAPS spaces operating in the Enhanced Indoor Air Quality Mode, **provide between 5 and 11 Air Changes per Hour (ACH).**
- Current code minimum ACH is 2.8-3.5.
- **Results of 5 ACH and above are considered excellent in mitigating the risk of disease transmission by the Harvard School of Public Health.**
- **AAPS Comprehensive Room Ventilation Study published today**

AAPS Next Steps Spring, 2021

- **Final preparations for Stage 1 Opening Continue**
- **Safe & Healthy Spring Break**
- **March 25th & 26th Opening of In-School Learning for Stage 1 students & staff**

Students in Self-contained classrooms, all levels

Preschool, Y5, & Kinder

This Week:

- **AAPS Room by Room Air Ventilation Study Published**
- **Middle & High School Community Information Sessions**
- **Middle School & High School Registration Survey Open**

AAPS Next Steps 2021

~Looking Ahead~

- **Robust Summer Learning Session, 2021**
 - Include Extended School Year & recovery services for students with special needs
 - Full Rec & Ed Summer Enrichment programming
 - Debut information next Wed, March 24th
- **Strong back-to-school launch, 2021**

Full in-person learning opportunities across all AAPS schools
- Will also offer, separately, a **fully virtual educational experience in AAPS for students & families who choose for school year 20-21**

Reminder: AAPS Daily Attendance Practice and Monitoring

Daily Attendance Practices:

- Teachers record attendance daily
- Students who have logged in at any time during the learning block are marked “Present” (P)
- Students who have not logged in are marked “Unverified” (UNV)
- As has always been our practice, **in real time**, school support teams, including the office professional reach to families to assist students with logging in and attending



State Legislation on Student Interaction (PA 165)

- (1) For a student to be considered a “pupil engaged in pandemic learning,” the student must have, at a minimum, one two-way interaction “during the week on which 2020-2021 pupil membership count day falls and during each week for the 3 consecutive weeks after the week on which 2020-2021 pupil membership count day falls.” MCL 388.1606(9)(c).
- (2) The District’s Extended COVID-19 Learning Plan, created pursuant to Section 98a of the State School Aid Act, must include a “requirement that the district shall ensure that 2 2-way interactions occur . . . during each week of the school year for at least 75% of pupils enrolled in the district.” MCL 388.1698a(1)(i).
- (3) To be excused from the requirement that the District “have at least 75% of the district’s membership in attendance on any day of pupil instruction” for the 2020-2021 school year, the District must “ensure that 1 2-way interaction occurs . . . during each month of the school year for at least 75% of pupils enrolled in the district.” MCL 388.1701(d), (h).

Reminder: State Legislation on 2-Way Interaction (PA 165)

State Requirement:

- 2-Way Interaction, 2 times per week
- 75% of students attending daily
- Communication between teacher or another district employee responsible for student learning, grade progression or academic progress
- Initial communication followed by response, relevant to the course or overall academic progress/grade progression
- Record of communication maintained/logged
 - Email
 - Telephone
 - Instant Message
 - Face-to-Face

Student Engagement Rates – 2 Way Communication

Percent of Students with 2 or More Two-Way Communications Recorded, by Week, by Level									
Timeframe	All Students	Elementary Grades K-5	Middle Grades 6-8	High Grades 9-12	Timeframe	All Students	Elementary Grades K-5	Middle Grades 6-8	High Grades 9-12
Week 1 9/9/2020 - 9/15/2020	94.47%	91.74%	97.45%	96.30%	Week 14 12/9/2020 - 12/15/2020	94.85%	93.65%	97.42%	94.81%
Week 2 9/16/2020 - 9/22/2020	95.76%	94.32%	97.64%	96.52%	Week 15** 12/16/2020 - 12/18/2020	91.59%	90.00%	96.04%	90.82%
Week 3 9/23/2020 - 9/29/2020	95.83%	94.55%	97.50%	96.52%	Week 16** 1/4/2021 - 1/5/2021	92.57%	91.08%	95.96%	92.37%
Week 4 9/30/2020 - 10/6/2020	95.86%	94.38%	97.58%	96.79%	Week 17 1/6/2021 - 1/12/2021	94.70%	93.67%	97.23%	94.44%
Week 5 10/7/2020 - 10/13/2020	96.13%	94.55%	97.85%	97.19%	Week 18*** 1/13/2021 - 1/19/2021	93.68%	92.74%	96.61%	93.05%
Week 6 10/14/2020 - 10/20/2020	95.87%	94.27%	97.93%	96.75%	Week 19 1/20/2021 - 1/26/2021	94.69%	93.89%	97.18%	94.12%
Week 7 10/21/2020 - 10/27/2020	95.42%	93.89%	97.45%	96.21%	Week 20 1/27/2021 - 2/2/2021	94.95%	94.03%	97.59%	94.47%
Week 8 10/28/2020 - 11/3/2020	94.92%	93.38%	97.05%	95.65%	Week 21 2/3/2021 - 2/9/2021	95.35%	94.12%	97.53%	95.60%
Week 9 11/4/2020 - 11/10/2020	95.15%	93.29%	97.40%	96.26%	Week 22**** 2/10/2021 - 2/16/2021	90.24%	91.33%	93.55%	86.49%
Week 10 11/11/2020 - 11/17/2020	94.80%	93.08%	97.21%	95.62%	Week 23 2/17/2021 - 2/23/2021	95.36%	93.54%	97.53%	96.46%
Week 11 11/18/2020 - 11/24/2020	94.52%	93.02%	96.94%	95.01%	Week 24 2/24/2021 - 3/2/2021	95.24%	93.88%	97.48%	95.63%
Week 12* 11/25/2020 - 12/1/2020	92.93%	91.46%	95.95%	92.98%	Week 25 3/3/2021 - 3/9/2021	94.78%	93.13%	97.21%	95.45%
Week 13 12/2/2020 - 12/8/2020	94.33%	92.61%	96.75%	95.12%					

*Only two synchronous days this week due to Thanksgiving, thus less opportunities to attend/two-way communication
 **Only two synchronous days each week due to Winter Break, thus less opportunities to attend/two-way communication
 ***Only three synchronous days this week due to Martin Luther King day, thus less opportunities to attend/two-way communication
 ****Due to mid-winter break and a snow day, there was only one day of synchronous instruction in week 22



Average Daily Attendance Rate, by Week, by Level									
Timeframe	All Students	Elementary Grades K-5	Middle Grades 6-8	High Grades 9-12	Timeframe	All Students	Elementary Grades K-5	Middle Grades 6-8	High Grades 9-12
Week 1 9/9/2020 - 9/15/2020	84.89%	85.06%	87.97%	82.61%	Week 14 12/9/2020 - 12/15/2020	88.52%	89.14%	93.91%	84.05%
Week 2 9/16/2020 - 9/22/2020	91.54%	89.97%	94.67%	91.64%	Week 15 12/16/2020 - 12/18/2020	86.93%	87.86%	92.81%	81.69%
Week 3 9/23/2020 - 9/29/2020	91.32%	90.50%	94.07%	90.64%	Week 16 1/4/2021 - 1/5/2021	89.17%	88.98%	93.63%	86.44%
Week 4 9/30/2020 - 10/6/2020	91.48%	90.67%	94.47%	90.64%	Week 17 1/6/2021 - 1/12/2021	88.36%	89.62%	93.32%	83.30%
Week 5 10/7/2020 - 10/13/2020	91.79%	90.47%	94.79%	91.62%	Week 18 1/13/2021 - 1/19/2021	87.55%	88.96%	92.77%	82.08%
Week 6 10/14/2020 - 10/20/2020	91.54%	91.14%	94.75%	89.97%	Week 19* 1/20/2021 - 1/26/2021	91.28%	90.32%	93.29%	N/A
Week 7 10/21/2020 - 10/27/2020	90.15%	90.27%	94.13%	87.33%	Week 20* 1/27/2021 - 2/2/2021	91.57%	90.69%	93.40%	N/A
Week 8 10/28/2020 - 11/3/2020	87.75%	90.25%	88.44%	83.80%	Week 21* 2/3/2021 - 2/9/2021	89.56%	90.15%	93.84%	85.84%
Week 9 11/4/2020 - 11/10/2020	90.30%	89.91%	93.94%	88.41%	Week 22 (one day only) 2/10/2021 - 2/16/2021	90.58%	92.18%	93.47%	86.39%
Week 10 11/11/2020 - 11/17/2020	91.40%	88.56%	95.07%	92.92%	Week 23 2/17/2021 - 2/23/2021	89.62%	90.08%	93.17%	86.58%
Week 11 11/18/2020 - 11/24/2020	87.95%	88.21%	93.25%	84.03%	Week 24 2/24/2021 - 3/2/2021	88.71%	89.53%	93.40%	84.39%
Week 12 11/25/2020 - 12/1/2020	89.14%	88.87%	93.15%	86.84%	Week 25 3/3/2021 - 3/9/2021	88.25%	89.08%	92.89%	83.95%
Week 13 12/2/2020 - 12/8/2020	88.67%	88.87%	93.44%	85.21%					

Note: These averages are based on M-Tu-Th-F attendance. Wednesdays are excluded because they are asynchronous. 11/3/2020 is excluded from week 8 because no classes were held on election day. 11/26/2020 & 11/27/2020 are excluded due to Thanksgiving. 12/21/2020, 12/22/2020, 12/31/2020, 1/1/2021 & 1/2/2021 are excluded from weeks 15 and 16 due to Winter Break. 1/18/2021 is excluded from week 18 due to Martin Luther King Day. 2/12/2021, 2/15/2021, and 2/16/2021 are excluded from week 22 because of mid-winter break and a snow day.

* High School attendance was removed from consideration during exam week periods because the schedule of exams does not comport with our daily attendance definitions.

Average Daily Attendance Rates

