



Daily Student Pre-Screening for COVID-19 Symptoms and Exposure

Updated 1/13/2022

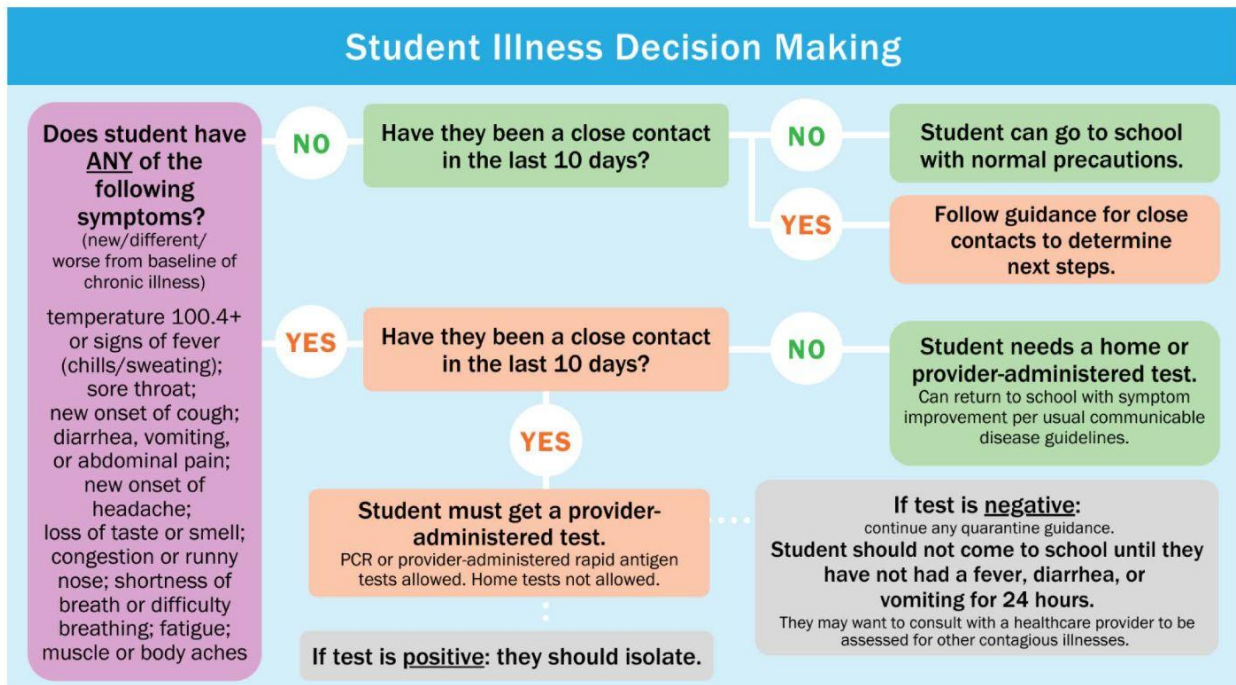
Help keep your student's school healthy and safe for all!

Parents/guardians are responsible for reviewing and responding to the questions below each day that their student will attend school in person.

1. In the past 24 hours, has your student experienced any of the following **NEW, WORSENING, or UNEXPECTED** symptoms:

- Fever of 100.4 or higher or feeling feverish (chills, sweating)
- Cough
- Difficulty breathing
- Fatigue
- Sore throat
- Vomiting, diarrhea, or abdominal pain
- Loss of taste or smell
- Severe headache
- Muscle or body aches
- Congestion/runny nose

If YES, follow the instructions in the Washtenaw County Health Department's flow chart:



What Families Can Do to Minimize Risk for Their Children : <https://bit.ly/WhatFamiliesCanDo>

AAPS School Nurse page: www.a2schools.org/domain/2291

Washtenaw County COVID-19 Free Testing Resources: washtenaw.org/3158/Testing